

THE PIONEER

QUEENSTOWN



FINISH

BANNOCKBURN



START

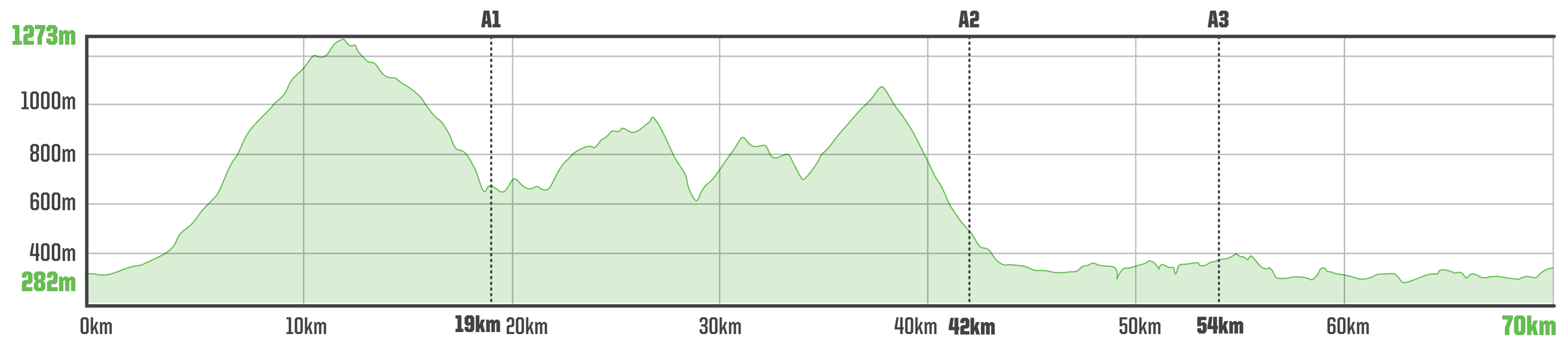
STAGE 5: 70KM



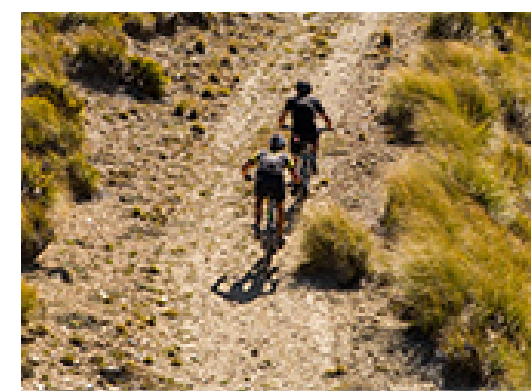
STAGE 5: DISTANCE **70KM**

ELEVATION GAIN **2130M**

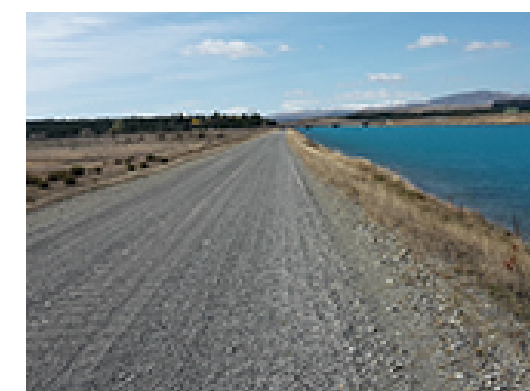
Bannockburn → Queenstown



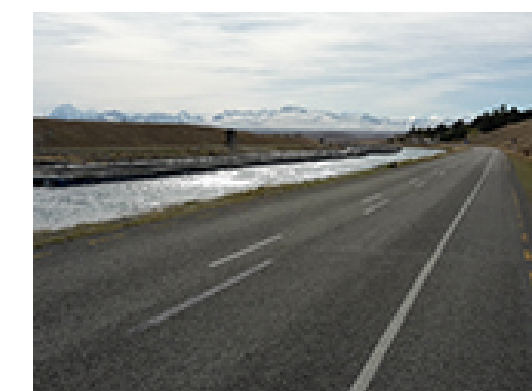
23%
CYCLE TRAIL



42%
4WD/FARM TRACK



23%
GRAVEL ROAD



12%
SEALED ROAD